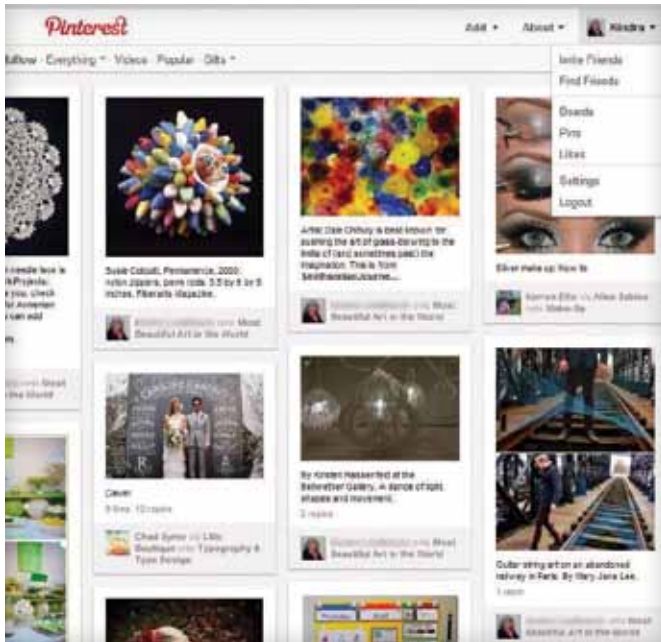


## Pinning Orientation

Once you have a Pinterest account, you'll use your home page and profile page to navigate.



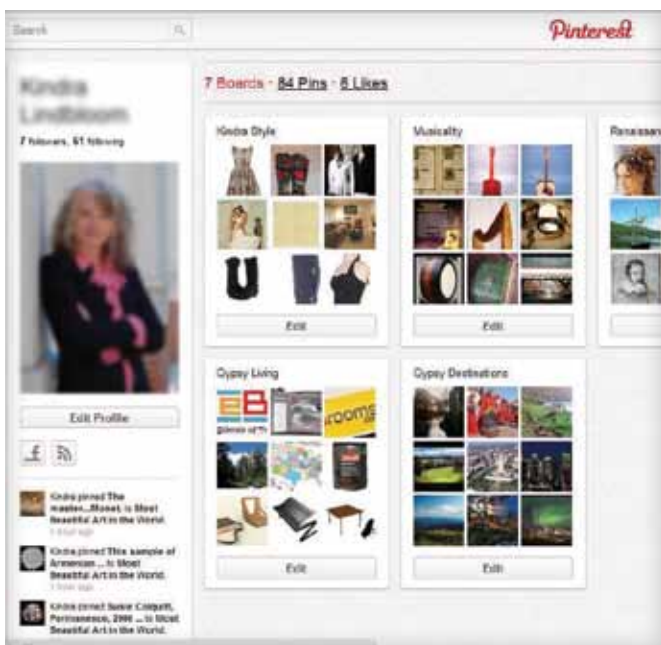
### Your Pinterest Home Page

To get to your home page, click on the Pinterest logo at the top of the screen.

Your home page shows pins of all the people and categories you follow. An activity feed shows the latest Pins, Likes, and Follows of the people and topics you follow. From your home page, you can get anywhere you need to go.

**Top Center Links:** Pinners You Follow, Everything, Videos, Popular, Gifts – These links take you to pages of pins organized in different ways.

**Top Right Links:** Add, About, [Your Name] – These links take you to pages or windows that help you manage your account. Add pinboards, pins and connections with websites, and get information about Pinterest. You also can find and invite friends and change your settings, including your photo. Settings is where you manually connect or disconnect with other social networking sites.



### Your Profile Page

This page holds your own pinboards. Edit pins and pinboards, changing the order of the boards or completely removing them or pins if you change your mind. Under your profile picture, an activity feed includes your own latest activity.

Your profile page contains the same top-right, drop-down menus available on your home page. In addition, you'll find the following:

- An Edit Profile button that takes you to your Settings page
- A running count of your followers and the people you are following
- A running count of your Boards, Pins, and Likes
- Icons to show other social media sites to which you are connected

As time goes on, don't forget to go out to the Web and bring back interesting new things. Part of the fun of being a member of this community is doing your part to keep everyone's Pinterest piqued.